

ALLDAY  
& MILLER



Cotswold Close, Uxbridge, UB8 2NA  
£600,000

4 3 2 C



Cotswold Close, Uxbridge, UB8 2NA

**£600,000**

- Four Bedrooms
- Loft Conversion with En Suite
- New Driveway
- Walking Distance to Town Centre
- Three Bathrooms
- Kitchen Diner Extension
- Cul De Sac
- Refurbished To High Standard

## Description

A much extended family home of grand proportions that currently enjoys, entrance hallway, ground floor shower room, bright through lounge, full width Kitchen/Diner extension with integrated appliances. The first floor has three well proportioned bedrooms and a modern family bathroom. The top floor enjoys the master bedroom loft conversion with en suite shower room and storage.

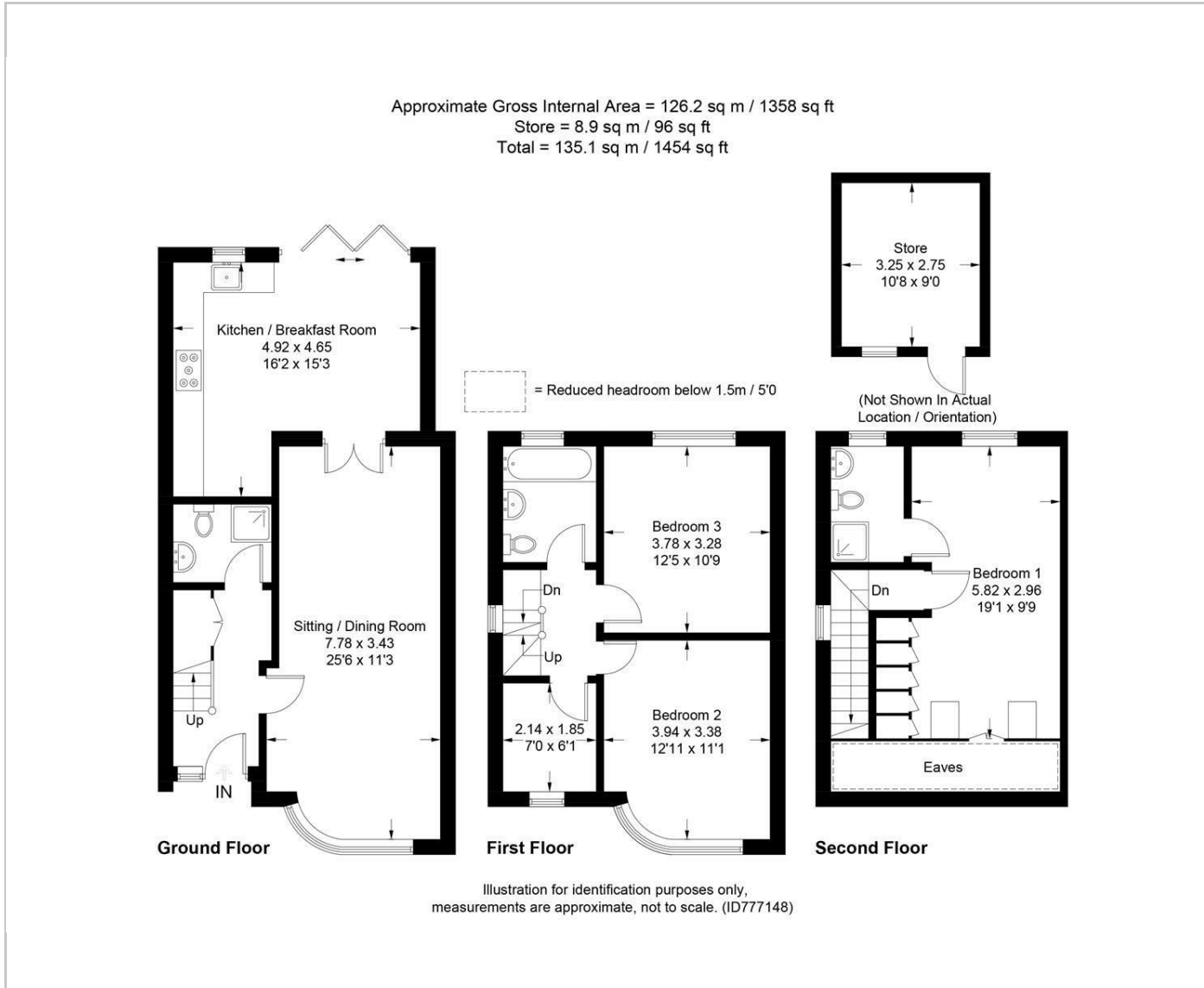
The front has a new driveway providing parking. The rear garden is approx. 50 ft with lawn, patio and a brick built outbuilding

## Situation

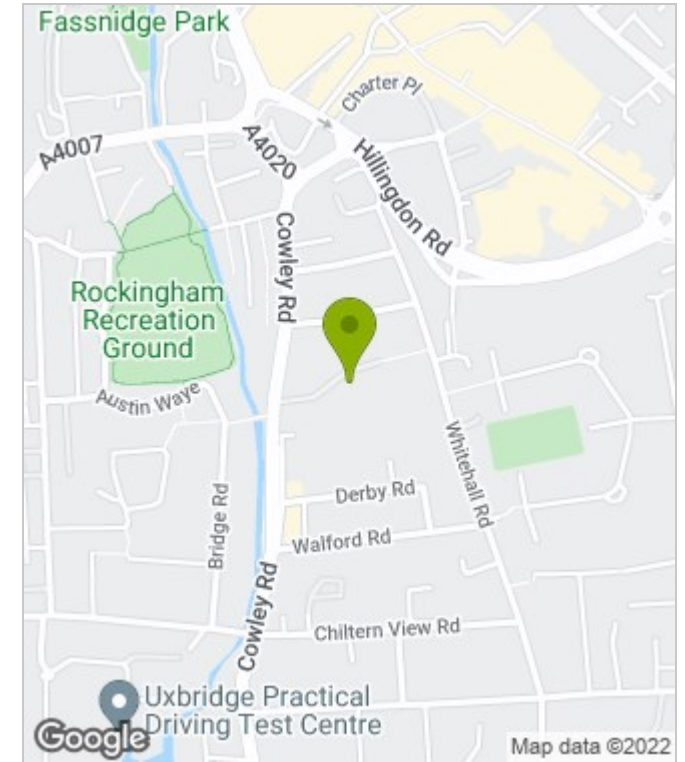
Cotswold Close is a pleasant cul-de-sac situated just off Cowley Road, within easy reach of local shops, schools and Uxbridge Town centre with its multiple shopping facilities, restaurants, bars and the Metropolitan/Piccadilly Line Station.



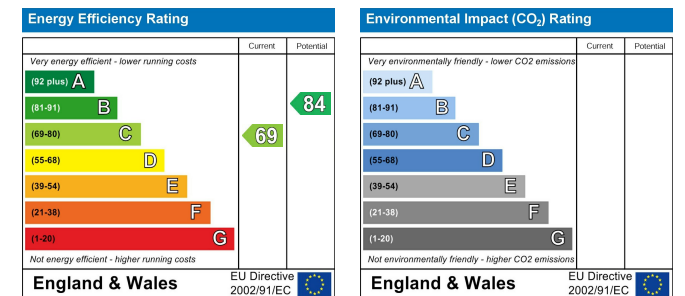
## Floor Plans



## Area Map



## Energy Performance Graph



These particulars, whilst believed to be accurate are set out as a general outline only for guidance and do not constitute any part of an offer or contract. Intending purchasers should not rely on them as statements of representation of fact, but must satisfy themselves by inspection or otherwise as to their accuracy. No person in this firm's employment has the authority to make or give any representation or warranty in respect of the property.

[www.alldayandmiller.co.uk](http://www.alldayandmiller.co.uk)

192 High Street, Uxbridge, Middlesex, UB8 1LB

T: 01895 641 000 | E: [sales@alldayandmiller.co.uk](mailto:sales@alldayandmiller.co.uk)

T: 01895 379 549 | E: [lettings@alldayandmiller.co.uk](mailto:lettings@alldayandmiller.co.uk)